



SHORTER COLLEGE



2017 President's Report

O. Jerome Green, Esq., President

2017

President's Report

TABLE OF CONTENTS

Shorter

Letter from the Chairman of the Board of Trustees	3
Letter from the President	4
About Shorter College	6
Historical Sketch of Shorter College	8
Enrollments Figures.....	17
5 Year Enrollment Projections.....	18
Second Chance Pell Program.....	19
Significant Achievements.....	21
Financials.....	24
Partnerships.....	25
Commencement Ceremony.....	26
Board of Directors.....	28

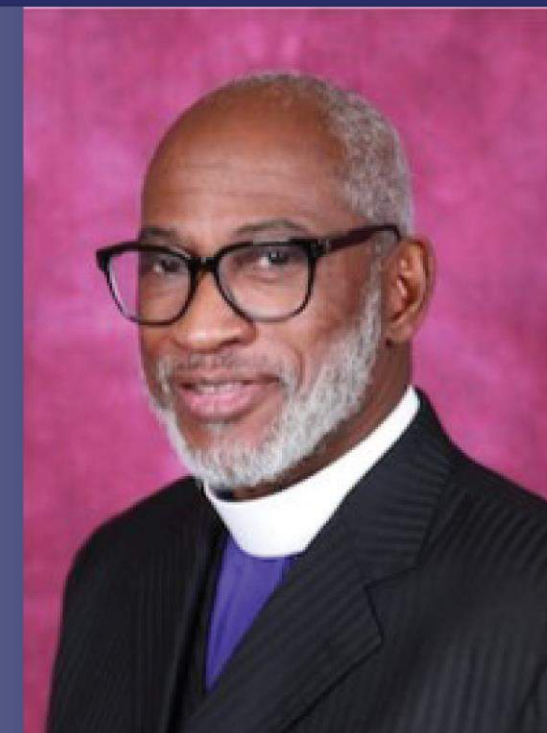
Letter from the Chairman of the Board of Trustees

To Senior Bishop McKinley Young, Bishop Clement W. Fugh, President of the Council of Bishops, Bishop Reginald T. Jackson, Chairman of the Education Commission, Bishops of the Church, General and Connectional Officers, Members of the Commission on Higher Education and the entire constituency of the African Methodist Episcopal Church.

Greetings!

The Board of Trustees of Shorter College, the members of the 12th Episcopal District and I are proud of the many successful efforts and accomplishments we have had over this past year. Our growth has been tremendous. Shorter College is not only a viable institution of higher learning that is fully accredited and is fiscally operating in the black, we have expanded our degree program tremendously, we are educating more students due to the Second Chance Pell Grant Program, we are breaking ground on a new exciting construction and revitalization projects, and our enrollment is steadily growing.

I want to thank our President, Dr. O. Jerome Green, who is working diligently with the Trustees, administration, faculty and support staff to ensure that Shorter College continues to excel providing an affordable and quality education for both the traditional and nontraditional student population. We are pleased to report on this wonderful year, and even more excited on the future of Shorter College!



Bishop Michael L. Mitchell



2017

President's Report

Letter from the President

Greetings,

Ladies and Gentleman, it is a pleasure to address you this year. I am excited to share that Shorter College is thriving and moving forward with the momentum that is generating astounding and consistent progress. Last year, our report was progressive during a truly pivotal time in our institution's history. With the continued support of the African Methodist Episcopal Church, Bishop Michael L. Mitchell and the Board of Trustees, and expanding partnerships within the community, we have witnessed this growth and revitalization.

Shorter College honors a year of achievement and growth!

We are pleased to report on the success with receiving our Second Chance Pell Program in June of last year. This program is an experiment announced to test whether participation in high quality education programs increases after expanding access to financial aid for incarcerated individuals. In the school year of 2016-17 we enrolled 250 students into Shorter College through this program and had a total student enrollment of 461 students in 2017.

On May 12, 2017 City and State officials joined with Shorter College's leadership team to break ground for a renovation project that will transform the exterior of our campus. We were able to secure a \$500,000 grant from the Arkansas Highway Department that will allow Shorter College to become an anchor for the community and the Argenta Development District and provide a more idyllic academic setting for our students.



2017

President's Report



Letter from the President

This year's Commencement Ceremony was a very pivotal accomplishment for Shorter College. We were able to transition four of our emphasis areas into full associate degree programs. Eagle Bank's President of Mortgage Lending, Lee Welfel gave the commencement address, and 53 students received degrees in five academic areas:

Basic Studies, Childhood Development, Christian Leadership, Criminal Justice, and Entrepreneur Studies.

Renovations and Continued New Construction are underway.

We are finalizing plans to commence construction of an office and classroom building on Shorter College's campus that will house the 12th Episcopal District's administrative office. We are also in the process of developing financing for a three building, \$3.5 million dollar student housing complex. The proposed student housing project is a part of the college's strategic plan, and will be developed in three phases.

With your support and God's blessing, we will continue to make Shorter College a place where life-transforming opportunities shape the futures of the young people that we serve according to our mission.

THE VISION

The vision of Shorter College is to remain a fully accredited two-year institution and to achieve distinction as a residential Christian College that excels in providing a challenging teacher-learner environment that will create a holistic transformative individual which embodies the four C's:

- **Competency** - The ability to perform in today's society
- **Character** – To ability to develop a lifestyle of integrity
- **Citizenship** – The ability to embrace social and civic responsibility
- **Culture** – The ability to understand and operate in a diverse environment

THE GOALS

GOAL 1: ACADEMIC EXCELLENCE:

Enrich academic instructional programs and student services to equip students with the knowledge, skills and abilities to become scholastically and professionally productive in today's global society.

GOAL 2: STUDENT SERVICES:

Improve student support services that will enrich career goals, academic and co-curricular experiences.

GOAL 3: INSTITUTIONAL ADVANCEMENT AND PARTNERSHIPS:

Increase the level of external outreach in order to expand opportunities for working with other educational institutions, alumni, foundations, government agencies and business partners in ways that increase potential sources of funding and produce associations for mutual benefit.

GOAL 4: OPERATIONAL & RESOURCE ENHANCEMENT

Advance the institutional and environmental resources by further streamlining the college's operations where efficiencies can be gained, making optimal use of prior investments in systems, re-aligning infrastructure with evolving needs, securing protected information, and minimizing waste attributable to technology use.

GOAL 5: STUDENT ENROLLEMENT AND RECRUITMENT

Increase student enrollment and refine student recruitment strategies to recruit and retain a diverse student population.

Founded by the African Methodist Episcopal Church in 1886, Shorter College was a logical and pragmatic response to the need of recently freed slaves to overcome the many disadvantages and deprivations of slavery and racial discrimination. This was a time, little more than twenty years after the end of the Civil War and the abolition of slavery, when black people had no access to institutions of higher learning. In fact, the prevailing attitude was that Blacks had no capacity for learning and the vast majority lacked basic education and skills. The church seized the opportunity to provide instruction leading to a general education, but also aimed at developing competent leadership among Black people.

In November 1886, under the leadership of Bishop T.M.D. Ward, the Arkansas Annual Conference of the African Methodist Episcopal Church, less than twenty years after the A.M.E. church was established in Arkansas, formulated a plan for establishing an institution of higher learning. No doubt this was influenced by the years Nathan Warren, one of the founders of the African Methodist Episcopal Church in Arkansas, spent in Xenia, Ohio, at the time Bishop Daniel Payne was President of Wilberforce University. When it opened on September 15, 1886, the school was housed in the basement of Bethel A. M. E. Church on Ninth and Broadway in Little Rock, Arkansas and was named Bethel University. Its first session opened with an enrollment of 109 students.

HISTORICAL SKETCH OF SHORTER COLLEGE

In 1888, Bethel University was moved to Arkadelphia, Arkansas, where it opened its fifth academic year on September 23, 1891. In December 1892 the Annual Conference renamed the school to Shorter University in honor of Bishop James Alexander Shorter, organizer of the African Methodist Episcopal Church in Arkansas. On May 18, 1894, Shorter University was chartered under its new name. A year later, under the leadership of Principal F. T. Vinegar and Bishop W. B. Derrick, Shorter acquired land and buildings in North Little Rock, Arkansas. From September 22, 1895, to January 1898, the college maintained operations both in North Little Rock and, in Arkadelphia. At the end of a twenty-eight month transition, the college established itself at 604 Locust Street in North Little Rock in 1898 and terminated operations in Arkadelphia. At present the campus sits on three and one-half blocks of valuable property in the city of North Little Rock.

On August 14, 1903, the charter was amended to change the name of the institution to Shorter College, in that same year, the first building was erected and named Tyree Hall. This initiation of physical-plant expansion, which is attributed to Bishop Evans Tyree and President T. H. Jackson, is significant because it represents an unmistakable commitment to a permanent location. As funds became available, buildings were erected and the scope of its offerings broadened, at one time providing theological, vocational and liberal arts programs as a four-year college.

Shorter College's open enrollment policy was of great benefit to the African American population across the state of Arkansas and later in Oklahoma. Several of the clergy and lay leaders in the Twelfth Episcopal District graduated from Shorter College and later, Jackson Seminary located on the campus. Other institutions of higher learning in the state of Arkansas were closed to African Americans; therefore Shorter's presence served a great educational void.

In 1955, a decision was made to operate the college as a 2-year institution under the leadership of President Theophilus D. Alexander and Bishop William R. Wilkes. The prevailing institutional goal was to develop and maintain programs and services characteristic of a first rate Junior College. Its two priorities were development of a physical plant designed to support its instructional program and goals, and an administration capable of ensuring institutional effectiveness and adherence to the institution's goals.

In 1958, A.O. Wilson was appointed President and served a two-year term. He was succeeded by Dr. H. Solomon Hill in June 1960. Dr. Hill's eight-year tenure brought many improvements to the college and the community as well. Among his accomplishments were the construction and furnishing of the Sherman-Tyree Hall in May 1961 (under Bishop O. L. Sherman's leadership), as well as the completion of the new library in 1968.

In May 1970, The Board of Trustees, under the leadership of Bishop D. Ward Nichols, elected Rev. Lonnie Johnson of Lawton, Oklahoma, as president of The College. After serving fourteen months, Rev. Johnson resigned and returned to Oklahoma.

In May 1972, Mr. Oley L. Griffin by unanimous consensus of the Board of Trustees was appointed by Bishop Nichols to oversee the operations as president. While President Griffin was in office, ground was broken for the S.S. Morris Student Center in November 1974. The building was completed in the fall of 1975. In the winter of 1977, when President R.J. Hampton was in office, ground was broken for the F.C. James Human Resources Center, named in honor of Bishop Frederick C. James. The James Center was completed in 1979.

In September 1980, the Board named the Reverend John L. Phillips, Sr., the thirty-seventh president of the college. A man of proven administrative ability, President Phillips received unanimous support from the other administrative officers and the faculty members for his plan to reorganize the administration, which he explained soon after taking office. The plan consisted of three phases: An analysis of the existing administrative organization; evaluation of existing administration functions by the criterion of relevance to the mission; and revision of the administrative system and job descriptions to establish a management-by-objectives administrative style conducive to planning, management, and evaluation that would ensure the relevance of the various functions of the college to its mission. The first phase of the plan was completed in January 1981; the second was included in a perpetual planning cycle essential to management by objectives; and the third was executed as, one by one, the various offices were adapted to management by objectives.

HISTORICAL SKETCH OF SHORTER COLLEGE

Under President Phillips administration, the college was led to full unconditional accreditation by the North Central Association of Colleges and Schools, the Arkansas Council of Independent Colleges and Universities, the National Association of Junior Colleges, and the Arkansas Department of Higher Education. This accreditation enabled Shorter College to compete for students who could then transfer easily to four-year institutions. In the years following, many attempts were made at improving the administrative effectiveness of the institution and shaping its programs to meet the needs of students.

In 1984, Bishop H. Hartford Brookins was assigned to the Twelfth (12th) Episcopal District of the African Methodist Episcopal Church. He served as the Chairman of the Board of Trustees responsible for the welfare and upkeep of Shorter College. Bishop Brookins' tenure of office ended in July 1988, with the subsequent assignment of Bishop Henry A. Belin, Jr. who became the Chairman of the Board of Trustees of Shorter College.

Dr. H. Benjamin Williams joined Shorter College as the Vice President for Academic Affairs in the Fall of 1984 under Dr. John L. Phillips. He was appointed the interim President in July 1987 and was confirmed the 38th President of the college in the March 1988. Dr. Williams resigned his leadership in June 1988. Dr. Williams succeeded in accomplishing the following: reinstating the men's basketball team, establishing a new federally funded program (Title III) designed to strengthen academic programs at the college; setting up a dormitory for the male students on campus (Honors Hall), and making some improvements in the administrative components of the college.

Dr. Williams was succeeded by Dr. W. Dean Goldsby who was appointed by the board to the seat of Interim President in June 1988 thereby vacating his previous position as Director for Student Services. Dr. Goldsby embarked on a number of improvement projects including: increasing the student enrollment for the 1988/89 session; overhauling and restructuring the internal financial management; and completing the physical improvement projects on campus (i.e. the renovation of Sherman Tyree Hall). During the administration of Dr. W. Dean Goldsby (1988-89), ground was broken for the Henry A. Belin-Health-Plex, which houses the Gymnasium.

Dr. Katherine P. Mitchell, elected on September 21, 1989, by the Board of Trustees, took office on November 1, 1989 becoming the first woman to be elected President of the college. Under Dr. Mitchell's leadership, the college made significant progress to include the completion of the Henry A. Belin Health-Plex and the Alexander-Turner Child Development Center.

In 1998, Dr. Irma Hunter Brown was elected President of Shorter College. Following Dr. Brown's tenure, the Board of Trustees named Dr. Cora D. McHenry acting president of Shorter College in April 2001. In May 2002, the Board of Trustees elected Dr. McHenry as President. The Board of Trustees and the administrative staff set out on a two-phase program of revitalization and implementation of the newly adopted strategic plan. Following the administration of Dr. Cora McHenry, the Board of Trustees elected Lillie Alexis as its 43rd President.

HISTORICAL SKETCH OF SHORTER COLLEGE

In June 2008, Bishop Samuel L. Green, Sr., the 125th elected and consecrated Bishop of the African Methodist Episcopal Church, was assigned to the 12th Episcopal District. His responsibility included serving as Chairman of the Board of Trustees for Shorter College.

Shorter College had lost its accreditation in 1998, but with a watchful board and a few dedicated staff, the doors of the college were kept open. Within the first few months, Bishop Green assembled the Board of Trustees to assess the situation of Shorter College and to critically evaluate its future.

After reviewing the institution's mission, goals, and objectives, the Board of Trustees determined that Shorter College should move forward in continuing its rich heritage. They elected to bring back one of its former presidents, Dr. Katherine P. Mitchell, to lead the effort to gain candidacy status with the Transnational Association of Christian Colleges and Schools (TRACS). An intensive eighteen month process with an introspective critical look at Shorter College resulted in Shorter Colleges' self-study report which was presented to TRACS. The self-study team, then, made its initial visit to the College.

On April 13, 2011, Shorter College received notification of its completion of this accomplishment: candidacy status was granted. Dr. Katherine P. Mitchell had completed her task. The next step was to work toward full accreditation.

In July 2012, the Board of Trustees elected O. Jerome Green, Esq., as the 45th President of Shorter College. The Board charged Dr. Green and staff to move Shorter College to full accreditation. The team commenced its task. Full-time faculty were hired to instruct students; student learning was facilitated; infrastructures were enhanced, and student services were strengthened. Sound fiscal affairs were maintained and curriculum was enhanced. Consequently, with intensive work, strong leadership, and a committed board, the self-study for full accreditation was developed and submitted to TRACS.

During this process, Shorter welcomed fifty (50) enrolled students in the 2012 fall semester and two hundred thirty six (236) enrolled students in the 2013 spring semester. The first summer school session held in more than ten years had 83 students enrolled for summer session I, and 90 students enrolled for summer session II.

TRACS sent another site team to Shorter College on August 19-22, 2013. By this time, enrollment for fall 2013 had reached 331 new and returning students. TRACS evaluated the data and relevant information in the accreditation report and made its preliminary determination. On October 29, 2013, the Chairman and representatives of the Board of Trustees and administration of Shorter College traveled to San Diego, California to stand before the Commissioners of the Transnational Association of Christian Colleges and Schools (TRACS) to answer questions relative to Shorter College's adherence to TRACS' accreditation standards. At the end of the interview, Shorter College was awarded full accreditation status as a Category I institution for a period of five years -- 2013-2018.

With full accreditation, the focus for Shorter College was on excellence in all arenas. The committed staff focused on developing first-rate information technology, student services, assessment, strategic planning, curriculum development, faculty development, and other strategic areas. Great strides were made and are continuing to be improved in these areas. In the spring semester of 2014, Shorter College had a student enrollment of 437 students; library holdings were increased; cooperative library usage agreements were implemented; curricular improvements were made, and the renovation of the S. S. Morris Student Center was completed in July 2014.

In April 2015, two new Associate of Arts Degree Programs were added to the curriculum: Associate of Arts in Entrepreneurial Studies and the Associate of Arts in Criminal Justice. In August 2016, two new Associate of Arts Degree Programs were added to the curriculum: Associate of Arts in Christian Leadership and the Associate of Arts Early Childhood Development.

Future plans include the introduction of new degree programs, the building of an ultra-modern dormitory/with student apartments, and an administrative building with classroom and offices. An intensive fund raising strategy has a goal of one million dollars for 2017-2018. By 2020, Shorter College plans to have raised a total of \$5 million in unrestrictive private gifts and have an increase in the Shorter College Endowment Fund. The rebirth of Shorter College as a viable option for higher education is evident, and "You Fit Here."

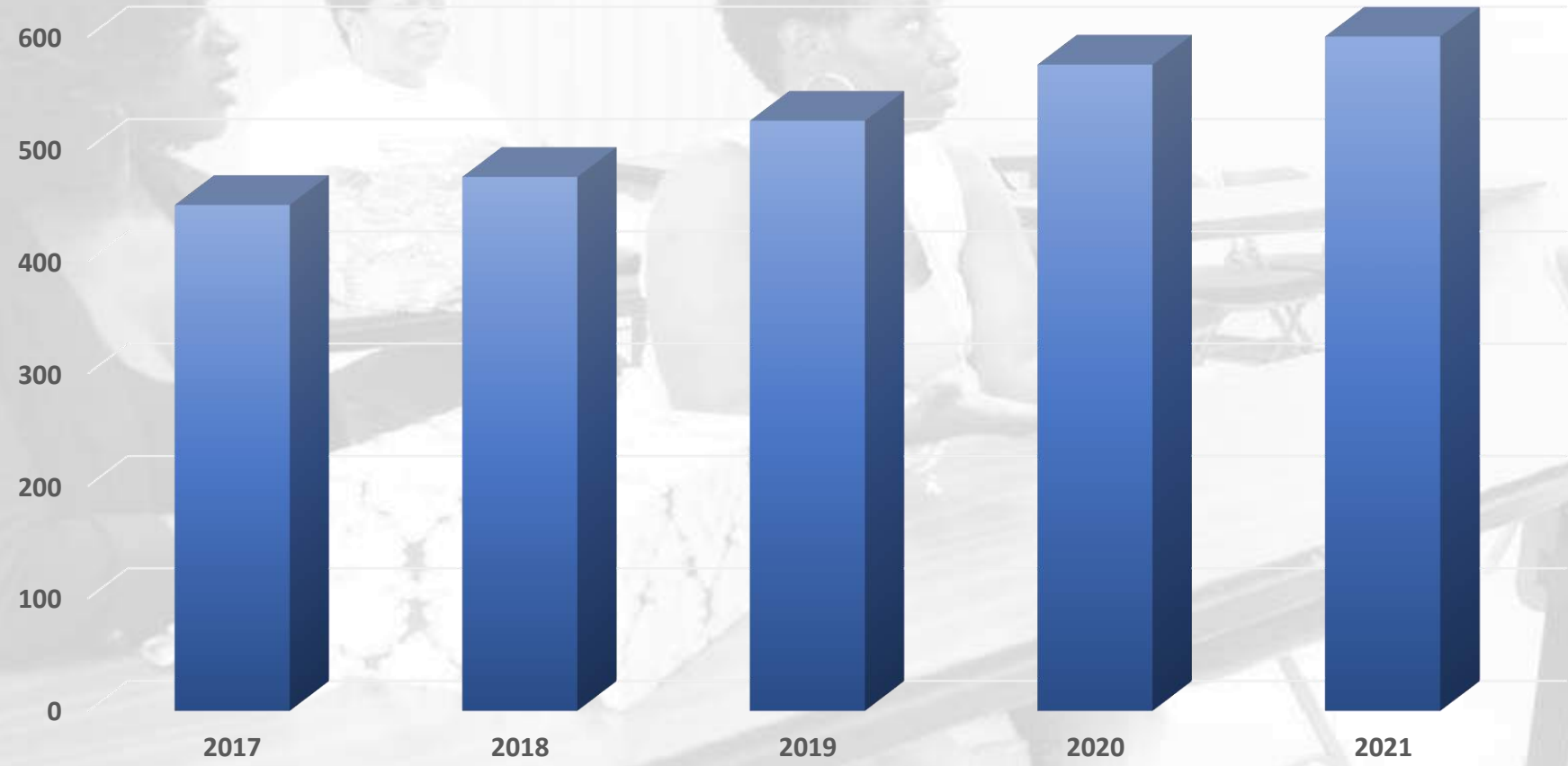
In July 2016, Bishop Michael Mitchell was elected and consecrated as the 134th Bishop of the African Methodist Episcopal Church. He was assigned to the 12th Episcopal District and with this Episcopal service, his responsibility includes serving as Chairman of the Board of Trustees for Shorter College.

ENROLLMENT FIGURES

	FA-2012	SPR-2013	FA-2013	SPR-2014	FA-2014	SPR-2015	FA-2015	SPR-2016	FA-2016	SPR-2017
Total # of Students	47	196	330	450	403	272	236	217	408*	469*
FTE (12hrs)	43	164	333	427	380	265	241	219	396*	321*

(*) ENROLLMENT INCLUDES EXPERIMENTAL SITES (Second Chance Pell)

5 YEAR ENROLLMENT PROJECTIONS



Shorter College is one of two Arkansas Institutions participating in the Second Chance Pell Pilot Program for incarcerated students as provided under former President Barack Obama's direction. It is one of three HBCU's and one of 69 institutions throughout the United States. Shorter College is serving 268 students at five Arkansas Correctional facilities – Arkansas Community Correction (includes West Memphis and Texarkana), Arkansas Department of Correction (includes Wrightsville, Pine Bluff, and Ouachita River).

At the two ACC facilities, incarcerated students are housed for 18 months or less. This program is offered in modular (six-week sessions where students take 6-7 hours). These students may not have enough time to complete the Associate of Arts degree, however, with hopes they will continue post-release. Shorter College is committed to helping these students transition to other colleges and universities.

At the three ADC facilities, incarcerated individuals are there for up to five years. The semester approach is used and these students may earn the Associate of Arts Degree. All students must have less than five years, to be Pell eligible (no student loan default nor, sex offender). In addition to full-time faculty assisting, Shorter College recruit adjunct faculty near each of the correctional facilities. Faculty receives training by the facilities and Shorter College. To be successful, Shorter College works with the Arkansas Community Correction, Kevin Murphy, Deputy Director and with the Arkansas Department of Correction, Wendy Kelly.



2017

President's Report

SECOND CHANCE PELL PROGRAM

Shorter College has a team of staff representing financial aid, admissions, and academics that provide services on a weekly basis. This group, along with the President of the College, is very committed to see this experimental program work beyond the pilot. The Second Chance Pell Program aligns with Shorter College's philosophy, and has allowed us to bring this philosophy to the incarcerated population. The College has two other similar programs: The Arkansas Department of Youth Services – Alexander unit (serving juvenile offenders) & the Anchor Program, which serves previously incarcerated adults or adults who are on probation. We believe this is another opportunity for Shorter College to transform lives.

Shorter College has made significant gains in several areas during the past four and a half years. These include academic and student achievement, capital improvements, grants, assessment and evaluation.

Academic and Student Achievements

- Associate Degrees in the areas of Childhood Development, Christian Leadership, Criminal Justice, and Entrepreneurial Studies were approved.
- New Partnerships were established with college and universities in Arkansas and other African Methodist Episcopal colleges and universities.
- The A. W. Young Library made the change toward total automation and national and international connections through a library without walls.
- Fulltime faculty was increased by 38%.
- Career Placement Center was established.
- First graduates in four new degree programs made history.
- Child Development Center was refurbished and placed under Academic Affairs.
- A gift of a rare African Art Collection was donated.
- A teaching site at the Alexander Youth Center (a first for the State of Arkansas) was approved, and the first classes offered were in Summer Session 2015.
- Graduated the first two students from Alexander Youth Center May 2017.

- Student Internships, in state and out-of-state, were implemented
- One of 69 colleges and universities throughout the United States, Shorter College was selected as one of the three HBCU's and one of two Arkansas higher education institutions selected to participate in Second Chance Pell Grant Experimental Sites for Incarcerated Students.

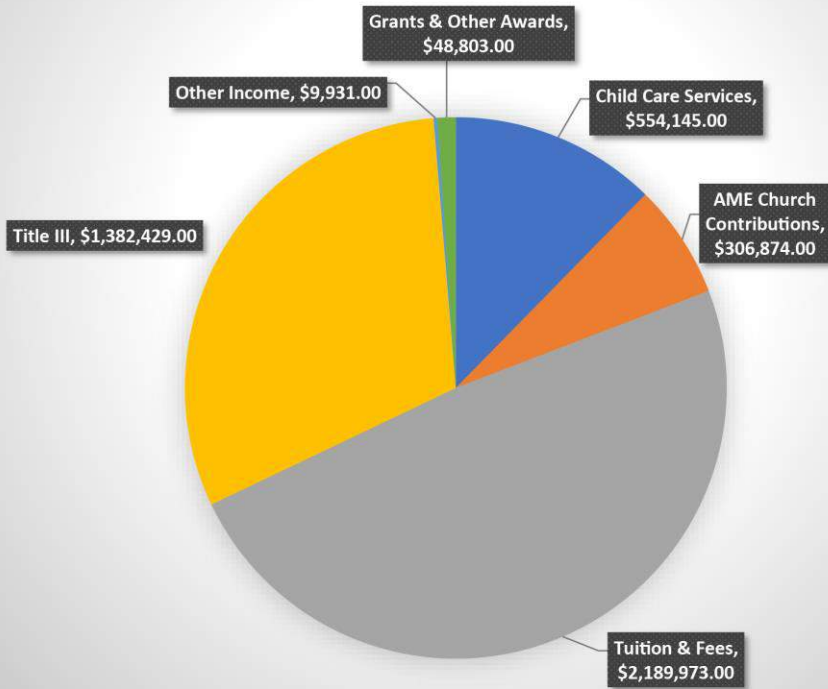
Capital Improvements

- Completed renovation of the Henry Belin Health Plex building.
- Completed renovation of the S.S. Morris Student Center.
- Completed the enhancement of A.W. Young Library.
- Completed renovations of F.C. James building.
- Completed renovations of Sherman-Tyree Hall.
- Modified a community cottage to become the Vine Health Center.
- Enhanced campus lighting along breezeway.
- Added security and playground area to the Child Development Center.
- Total Campus became handicapped accessible.

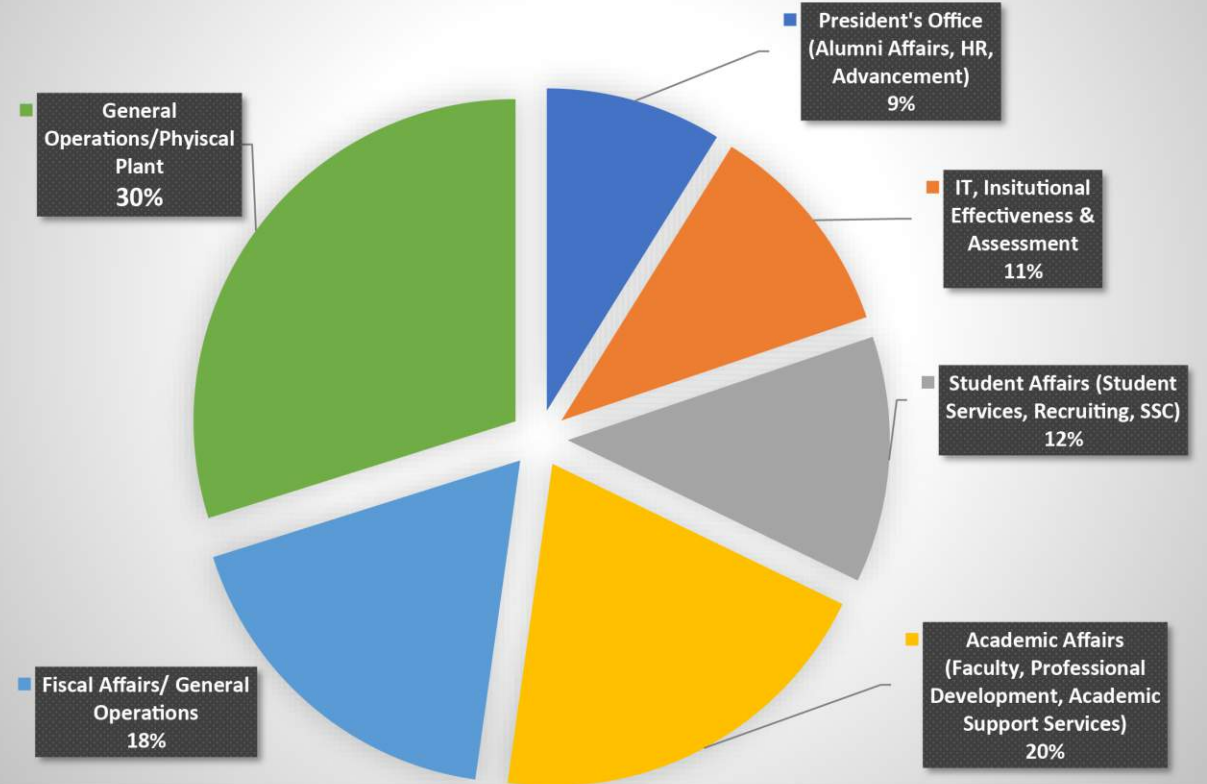
Federal, State, and Private Grants

- Title III-Part B 2015-2016- Developing institution \$1,108,000; part F-\$500,000
- Title III-Part B- 2016-2017 \$1,083,000.00; part F-\$250,000
- Rockefeller Grant for Black Males Initiative for Men of Shorter College 150,000.00
- The Arkansas Highway Department Street Scape Grant \$500,000.00; Phase I \$300,000.00-Phase II-2017.
- The Legacy Grant for a Smoke Free Tobacco Campus \$8,000.00
- Little Rock Chapter of The Links, Inc. \$20,000.00 Scholarship
- Individual Pathways Grant for Mental Health with Morehouse School of Medicine-\$3000.00

Shorter College Income Allocation 2016-2017



Shorter College Expenditures 2016-2017



PARTNERSHIPS

Shorter College Board of Trustees
Shorter College Alumni Associations
Arkansas Baptist College
Arkansas Black Caucus
Arkansas Community Corrections
Arkansas Department of Corrections
Arkansas Department of Higher Education
Arkansas Department of Human Services Division of Youth Services Arkansas Department of Workforce Services
Arkansas General Assembly
Arkansas Minority Health Commission
Arkansas Regional Innovation Hub
Arkansas State Highway & Transportation Department Arkansas State University
Arvest Bank
Centennial Bank
Central AR Planning & Development District
Central Arkansas Housing Corporation
City of Little Rock Workforce Development District
Dr. Alonzo Williams
Arkansas Diagnostic Center
Eagle Bank
Henderson State
Kreative Expressions
Little Rock Job Corps Center
LULAC-League of United Latin American Citizens Metropolitan Housing Alliance
North Little Housing Authority
North Little Rock Mayor's Office
North Little Rock School District
Philander Smith College
The Little Rock Chapter of The Links Inc.
University of Arkansas-Pine Bluff
Williams Baptist College

GRADUATES	SCHEDULED GRADUATION DATE	PROPOSED TRANSFER COLLEGE
Kamisha Adams	December 2016	N/A
Malik Austin	December 2016	University of Arkansas-Pine Bluff
Deangela Beamus	December 2016	University of Arkansas-Pine Bluff
Destiny Bolton	December 2016	N/A
John Davis	December 2016	University of Arkansas-Little Rock
Blakelly Dillard	December 2016	Philander-Smith College
Shynice Galloway	December 2016	University of Arkansas-Pine Bluff
Carl Green	December 2016	University of Arkansas-Little Rock
Olivia Harper	December 2016	Philander-Smith College
Charlotte Jackson	December 2016	UAMS
Shana Johnson	December 2016	Philander-Smith College
Sharon Johnson	December 2016	N/A
Samantha Lampkin	December 2016	Philander-Smith College
Icey Marshall	December 2016	N/A
Tiffanie Morgan	December 2016	Philander-Smith College
Doris Porter	December 2016	N/A
Sonja Washington	December 2016	Philander-Smith College
Yolanda Washington	December 2016	Philander-Smith College
Audra Williams	December 2016	University of Arkansas-Pine Bluff
Corey Williams	December 2016	N/A
Latrina Williams	December 2016	Philander-Smith College
Barnes, Ashley M.	Spring 2017	Philander-Smith College
Beasley, Shavonne F.	Spring 2017	N/A
Broadway, Willie James	Spring 2017	Real Estate School
Dumas, Shannon Monique	Spring 2017	University of Southern Indiana
Durham, Kyisha J.	Spring 2017	Philander -Smith College

GRADUATES	SCHEDULED GRADUATION DATE	PROPOSED TRANSFER COLLEGE
Flenoy, Shana R.	Spring 2017	N/A
Joiner, Vinson N.	Spring 2017	Philander-Smith College
Jones, Natasha N.	Spring 2017	Philander-Smith College
Kelley, Inkeria Shawanza	Spring 2017	N/A
Mason, Cekita M.	Spring 2017	University of Arkansas-Pine Bluff
Mays, Julius Jemone	Spring 2017	University of Arkansas-Fayetteville
Onukwube, Sidney C.	Spring 2017	Philander-Smith College
Parham, Rafael R.	Spring 2017	N/A
Smith, Nuketa J.	Spring 2017	Arkansas Baptist College
Thomas, Quinta Odell	Spring 2017	Philander-Smith College
Tucker, Veronica	Spring 2017	Philander-Smith College
Turner, Pamela Denise	Spring 2017	Arkansas Baptist College
Ukadike, Joachin E.	Spring 2017	University of Arkansas-Little Rock
Watson, Niesha L.	Spring 2017	Working
Watson, Sunzray Lachelle	Spring 2017	University of Arkansas-Little Rock
Williams, Marquitta M.	Spring 2017	Philander-Smith College
Winkler, Rodney Kim	Spring 2017	Philander-Smith College
Beasley, Dominique A.	Spring 2017	N/A
Blackmon, Joseph V.	Spring 2017	University of Arkansas-Pulaski Tech
Booth, Tamara L.	Spring 2017	University of Arkansas-Pulaski Tech
Collins, Robert L.	Spring 2017	N/A
Edwards, Lethecia D.	Spring 2017	Philander-Smith College
Hill, Darius E.	Spring 2017	Philander-Smith College
Jamerson, Ronnie Nakia	Spring 2017	N/A
Thigpen, Dolores D.	Spring 2017	Philander-Smith
Wofford, Gabrielle Johanna	Spring 2017	Baptist School of Nursing
Wright, Mishon L.	Spring 2017	N/A

COMMENCEMENT CEREMONY

GRADUATES	SCHEDULED GRADUATION DATE	PROPOSED TRANSFER COLLEGE
Flenoy, Shana R.	Spring 2017	N/A
Joiner, Vinson N.	Spring 2017	Philander-Smith College
Jones, Natasha N.	Spring 2017	Philander-Smith College
Kelley, Inkerá Shawanza	Spring 2017	N/A
Mason, Cekita M.	Spring 2017	University of Arkansas-Pine Bluff
Mays, Julius Jemone	Spring 2017	University of Arkansas-Fayetteville
Onukwube, Sidney C.	Spring 2017	Philander-Smith College
Parham, Rafael R.	Spring 2017	N/A
Smith, Nuketa J.	Spring 2017	Arkansas Baptist College
Thomas, Quinta Odell	Spring 2017	Philander-Smith College
Tucker, Veronica	Spring 2017	Philander-Smith College
Turner, Pamela Denise	Spring 2017	Arkansas Baptist College
Ukadike, Joachin E.	Spring 2017	University of Arkansas-Little Rock
Watson, Niesha L	Spring 2017	Working
Watson, Sunzray Lachelle	Spring 2017	University of Arkansas-Little Rock
Williams, Marquitta M	Spring 2017	Philander-Smith College
Winkler, Rodney Kim	Spring 2017	Philander-Smith College
Beasley, Dominique A.	Spring 2017	N/A
Blackmon, Joseph V.	Spring 2017	University of Arkansas-Pulaski Tech
Booth, Tamara L.	Spring 2017	University of Arkansas-Pulaski Tech
Collins, Robert L.	Spring 2017	N/A
Edwards, Lethecia D.	Spring 2017	Philander-Smith College
Hill, Darius E.	Spring 2017	Philander-Smith College
Jamerson, Ronnie Nakia	Spring 2017	N/A
Thigpen, Dolores D.	Spring 2017	Philander-Smith
Wofford, Gabrielle Johanna	Spring 2017	Baptist School of Nursing
Wright, Mishon L.	Spring 2017	N/A

BISHOP MICHAEL L. MITCHELL., CHAIR

REV. O. JEROME GREEN, PRESIDENT

REV. TYRONE A. BROOMFIELD, VICE CHAIR

DR. ANNA BURNETT GRAHAM, SECRETARY

REV. EUGENE BRANNON, TREASURER

REV. HARVEY G. POTTS, SR., CHAPLAIN

REV. JAMES GILES

REV. JAMES HOOPER

REV. LANELL ROSS

MRS. MARTHA FISHER
SIMPSON

MRS. ELMARIE JONES

DR. LEVENIS PENIX

DR. CAROLYN JONES

REV. CLARENCE H. GUY

REV. MARCELLUS FIELDS

REV. KEVIN CLAYTON

REV. RUTH HOLMES

REV. LONNIE JOHNSON

MR. LEROY GLENN

MRS. SAUNDRA LUCAS

MS. IDA McPHERSON

REV. MICHAEL WASHINGTON

REV. BILL A. BOWERS

MR. HAROLD MARTIN

MRS. LAVERNE NELSON

REV. TOM W. SCOTT

REV. W.R. NORFUL, SR.



SHORTER COLLEGE

You fit Here!

